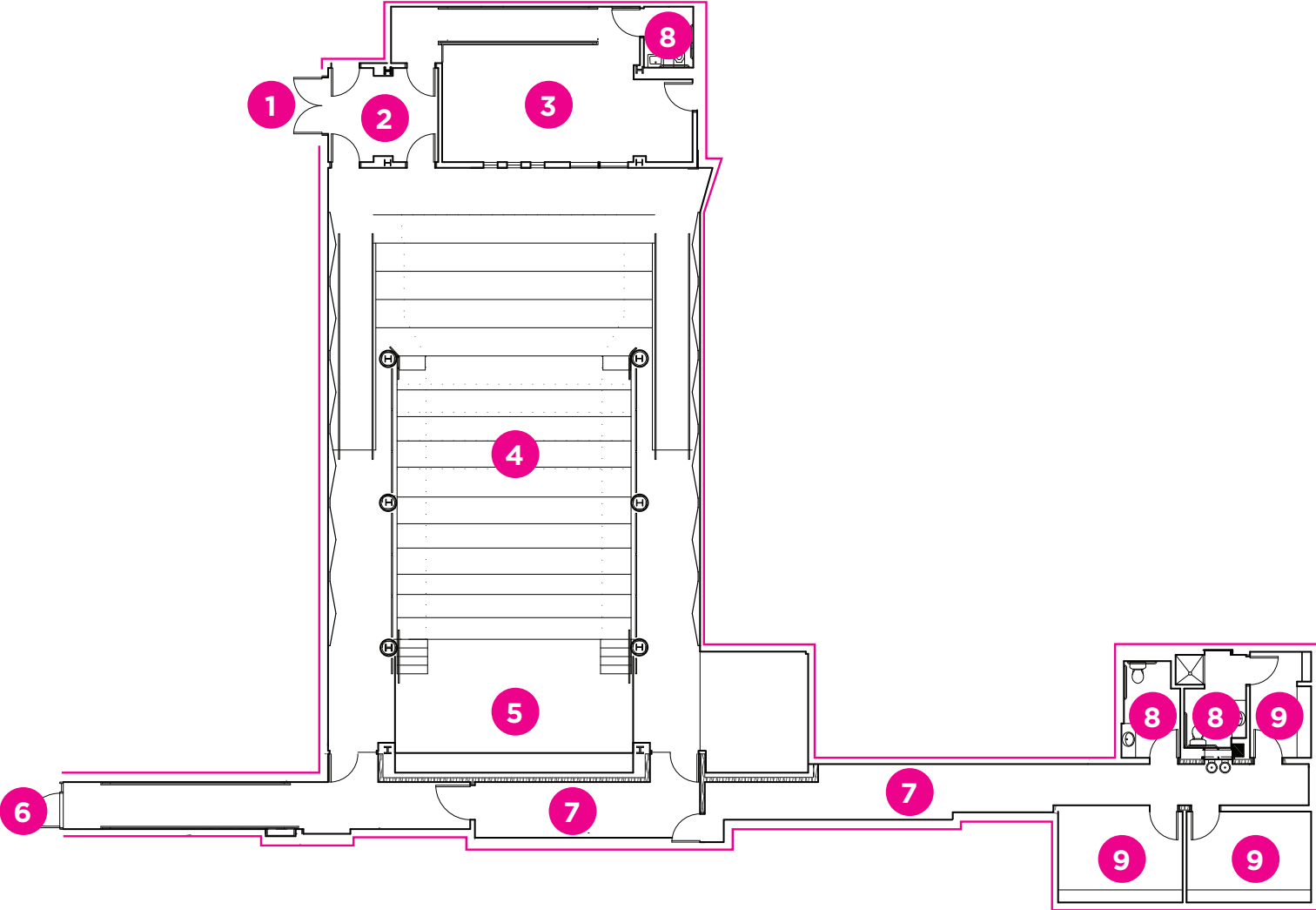


**LEONARD NIMOY THALIA FLOOR PLAN**



- 1. Entrance from Thalia lobby
- 2. Light lock
- 3. Tech booth
- 4. Auditorium
- 5. Stage (11'x19')
- 6. Crash doors to W95th St
- 7. Backstage
- 8. Restrooms (public restrooms in Thalia lobby)
- 9. Dressing rooms (75 to 130 sqft)